

GENERAL CO'S (300)

10 LADDERS, 2 CROWBARS,  
2 AXES

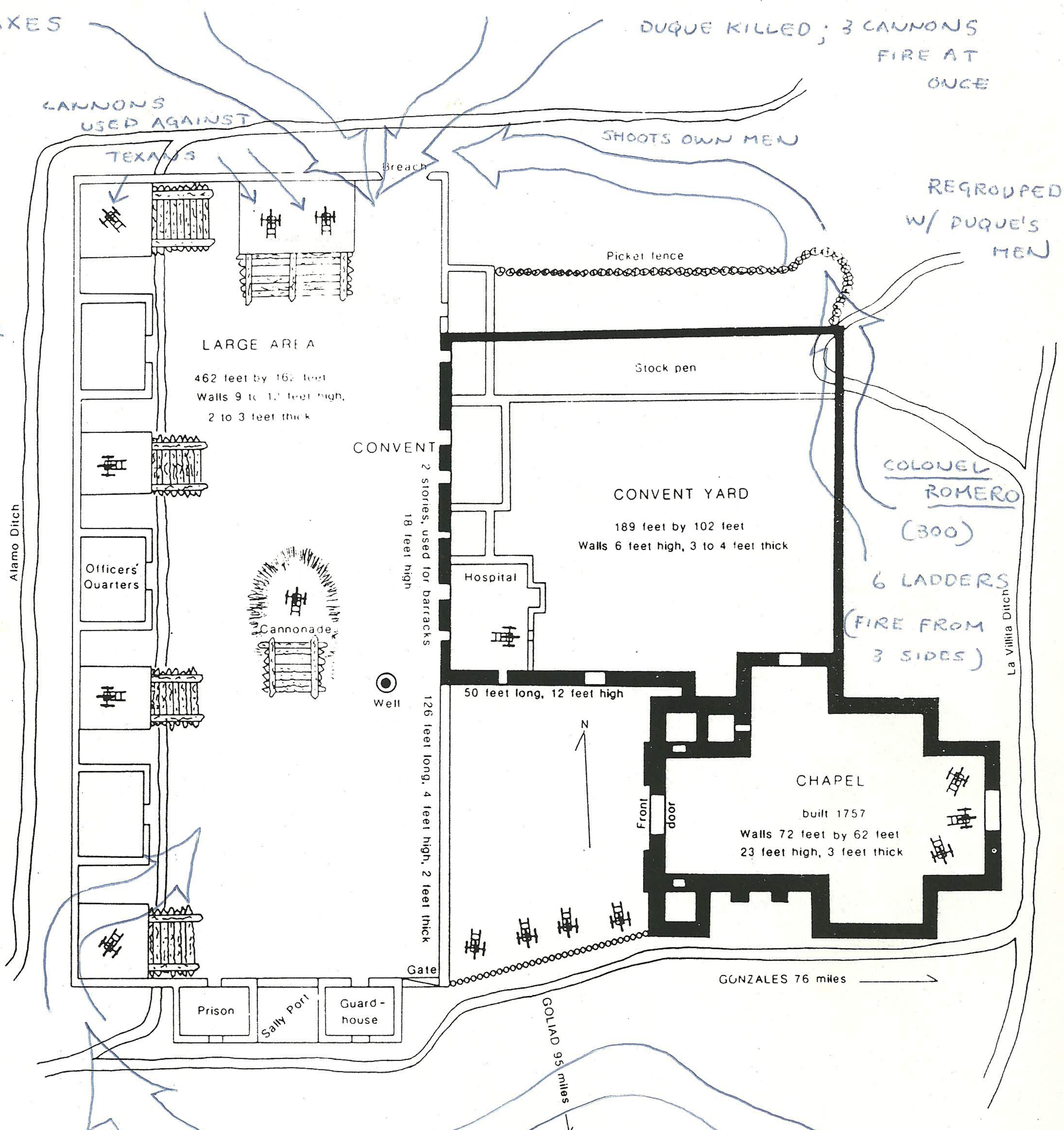
GENERAL DUQUE (400)

10 LADDERS, 2 CROWBARS, 2 AXES

DUQUE KILLED; 3 CANNONS  
FIRE AT  
ONCE

TURNED  
RIGHT;  
USED  
WEST  
WALL  
FOR COVER

↓  
continued  
to try to  
get inside



EASILY  
SCALE  
AND CAPTURE  
CANNON

AT TOP:  
RESERVES (400)  
SENT TO JOIN ATTACK  
ON NORTH WALL

SANTA ANNA'S  
CAVALRY  
WAITING...

(BEHIND PEACH  
ORCHARD)  
COLONEL (100)  
MORALES

2 LADDERS THE ALAMO

© 1988 University of Oklahoma Press

SMALL FORCE, WAITED  
FOR SHARP SHOOTERS TO  
BE REMOVED.